

STATE OF OHIO COUNTY OF GEAUGA TOWNSHIP OF TROY LOT 12

JOB #G28A142B (92-285)
PROPERTY OF L & C POLITZER
REVISED 2/22/98 LOT 19 TO LOT 12

TRO 00069 TRO 00069

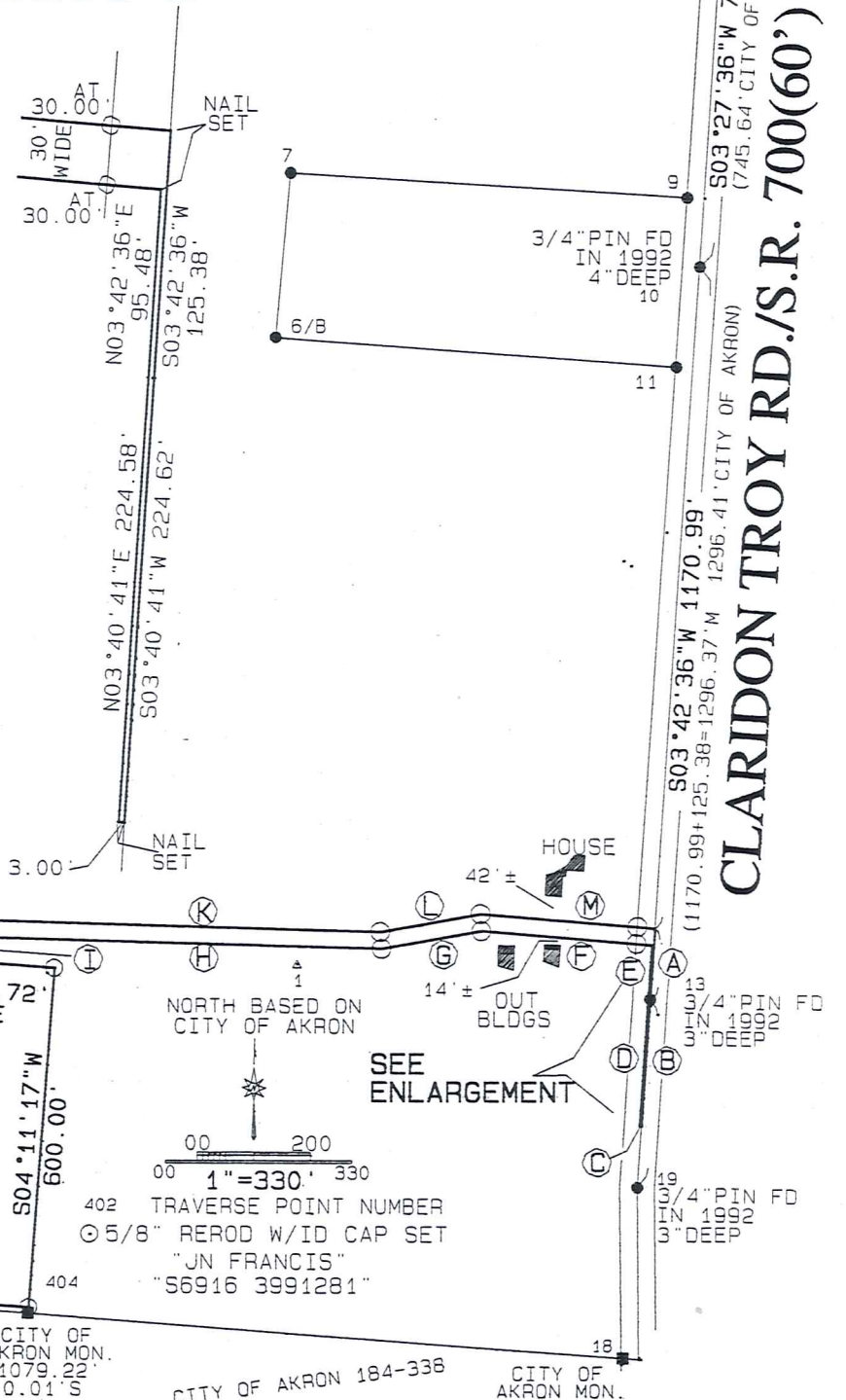
LOT 11
LOT 12
PATCH RD.

3/4" PIN FD
IN 1992
3" DEEP

503'27'36"W 745.63'
(745.64' CITY OF AKRON)

CLARIDON TROY RD./S.R. 700(60')

A	S03°42'36"W	125.38'
B	S03°40'41"W	224.62'
C	N85°19'19"W	3.00'
D	N03°40'41"E	224.58'
E	N03°42'36"E	95.48'
F	N85°16'27"W	298.49'
G	S79°43'09"W	178.67'
H	N88°34'37"W	714.99'
I	S04°11'17"W	43.37'
J	N04°11'17"E	71.95'
K	S88°34'37"E	740.50'
L	N79°43'09"E	179.55'
M	S85°16'27"E	304.92'



L & C POLITZER
TRUSTEE 653-678

7.093AC

NORTH BASED ON
CITY OF AKRON
SEE ENLARGEMENT
1"=330'
TRAVERSE POINT NUMBER
5/8" REROD W/ID CAP SET
"JN FRANCIS"
"S6916 3991281"

"CITY OF AKRON"
MONUMENT FD.
1730.90' / 0.01'S
BRASS DISK
IN CONC/TYP.
102

CITY OF
AKRON MON.
1358.79'
ON LINE
101

CITY OF
AKRON MON.
1079.22'
0.01'S
104

CITY OF AKRON 184-338

CITY OF
AKRON MON.
18

I HEREBY CERTIFY THAT THIS PLAT IS AN ACCURATE REPRESENTATION OF AN ACTUAL SURVEY PERFORMED BY ME IN JANUARY, 1998 AND IS AN OPINION BASED ON A COMPARISON OF AVAILABLE INFORMATION AND THE PHYSICAL POSITION OF EVIDENCE LOCATED IN ACCORDANCE TO OHIO ADMINISTRATIVE CODE 4733-37. ALL MONUMENTS FOUND OR SET ARE MADE OF PARAMAGNETIC MATERIAL UNLESS OTHERWISE NOTED. PINS SET IN 1998 ARE 5/8" INCH DIAMETER, 30 INCHES LONG WITH AN I.D. CAP "J.N. FRANCIS S6916 3991281".

JOHN N. FRANCIS
SURVEYOR
6916 (330) 399-1281 V/F
157 REW COURT WARREN, OHIO 44481-1125

SURVEY PLAT & LEGAL DESCRIPTION
APPROVED PER R.C. 315.251

R.S. 2/26/98 (Revised)

OFFICE OF THE
GEAUGA COUNTY ENGINEER

TRO-00069

TRO 00069

POLITZER
picked up 2-27-98
32-074277

Vol. 1155 - Pg. 403

DESCRIPTION OF SURVEY

OF 7.093 PARCEL JOB #G28A142b

SITUATED in the State of Ohio, County of Geauga, Township of Troy, and in ^{Section} Lot 12;

BEGINNING at a 3/4 inch pin found 3 inches deep on the north line of Lot 12 and at the intersection of the centerlines of Patch Road and Claridon Troy Road/S.R. 700;

THENCE South 03 degrees 27 minutes 36 seconds West, along the centerline of Claridon Troy Road, a distance of 745.63 feet to a 3/4 inch pin found 4 inches deep at an angle point;

THENCE South 03 degrees 42 minutes 36 seconds West, and continuing along said centerline, a distance of 1170.99 feet to a nail set at **TRUE PLACE OF BEGINNING** for the parcel being described;

THENCE South 03 degrees 42 minutes 36 seconds West, and continuing along said centerline, a distance of 125.38 feet to a 3/4 inch pin found 3 inches deep at an angle point;

THENCE South 03 degrees 40 minutes 41 seconds West, a distance of 224.62 feet to a nail set;

THENCE North 86 degrees 19 minutes 19 seconds West, an perpendicular to the centerline, a distance of 3.00 feet to a nail set;

THENCE North 03 degrees 40 minutes 41 seconds East, parallel to and 3.00 feet from the centerline, a distance of 224.58 feet to a nail set;

THENCE North 03 minutes 42 minutes 36 seconds East, parallel to, and 3.00 feet from the centerline, a distance of 95.48 feet to a nail set;

THENCE North 85 degrees 16 minutes 27 seconds West, passing through a 5/8 inch rerod with I.D. Cap (stamped, "J.N. FRANCIS S6916 3991281"/typical) set at 27.00 feet, said pin also being 30.00 feet from the centerline, a distance of 298.49 feet to a 5/8 inch rerod with I.D. Cap set;

THENCE South 79 degrees 43 minutes 09 seconds West, a distance of 178.67 feet to a 5/8 inch rerod with I.D. Cap set;

THENCE North 88 degrees 34 minutes 37 seconds West, a distance of 714.99 feet to a 5/8 inch rerod with I.D. Cap set;

THENCE South 04 degrees 11 minutes 17 seconds West, a distance of 43.37 feet to a 5/8 inch rerod with I.D. Cap set;

THENCE South 85 degrees 48 minutes 43 seconds East, and parallel to the north line of property owned by the City of Akron(184-338), a distance of 140.72 feet to a 5/8 inch rerod with I.D. Cap set;

THENCE South 04 degrees 11 minutes 17 seconds West, and perpendicular to the north line of the City of Akron, a distance of 600.00 feet to a 5/8 inch rerod with I.D. Cap set 10.00 feet from a concrete monument with a brass cap stamped "CITY OF AKRON" found on the north line of the City of Akron;

THENCE North 85 degrees 48 minutes 43 seconds West, parallel to and 10.00 feet distant from the north line of the city of Akron, a distance of 450.00 feet to a 5/8 inch rerod with I.D. Cap set;

THENCE North 04 degrees 11 minutes 17 seconds East, and perpendicular to the north line of the City of Akron, a distance of 600.00 feet to a 5/8 inch rerod with I.D. Cap set;

THENCE South 85 degrees 48 minutes 43 seconds East, and parallel to the north line of the City of Akron, a distance of 279.28 feet to a 5/8 inch rerod with I.D. Cap set;

THENCE North 04 degrees 11 minutes 17 seconds East, a distance of 71.95 feet to a 5/8 inch rerod with I.D. Cap set;

THENCE South 88 degrees 34 minutes 37 seconds East, a distance of 740.50 feet to a 5/8 inch rerod with I.D. Cap set;

THENCE North 79 degrees 43 minutes 09 seconds East, a distance of 179.55 feet to a 5/8 inch rerod with I.D. Cap set;

THENCE South 85 degrees 16 minutes 27 seconds East, and passing through a 5/8 inch rerod with I.D. Cap set 30.00 feet from the centerline, a distance of 304.92 feet to the **TRUE PLACE OF BEGINNING**, containing **7.093** acres more or less and subject to all legal highways and easements as surveyed by John N. Francis, Professional Surveyor S-6916, in January/February, 1998. North is based on work performed by the City of Akron. This parcel is a part of properties owned by L. & C. Politzer-Trustee(653-678, and all pins found or set are made of para-magnetic material unless specifically noted.

G28a142b 2/06/98

SURVEY PLAT & LEGAL DESCRIPTION
APPROVED PER R.C. 315.251

R.S. 2/26/98 (Revised)

OFFICE OF THE
GEAUGA COUNTY ENGINEER